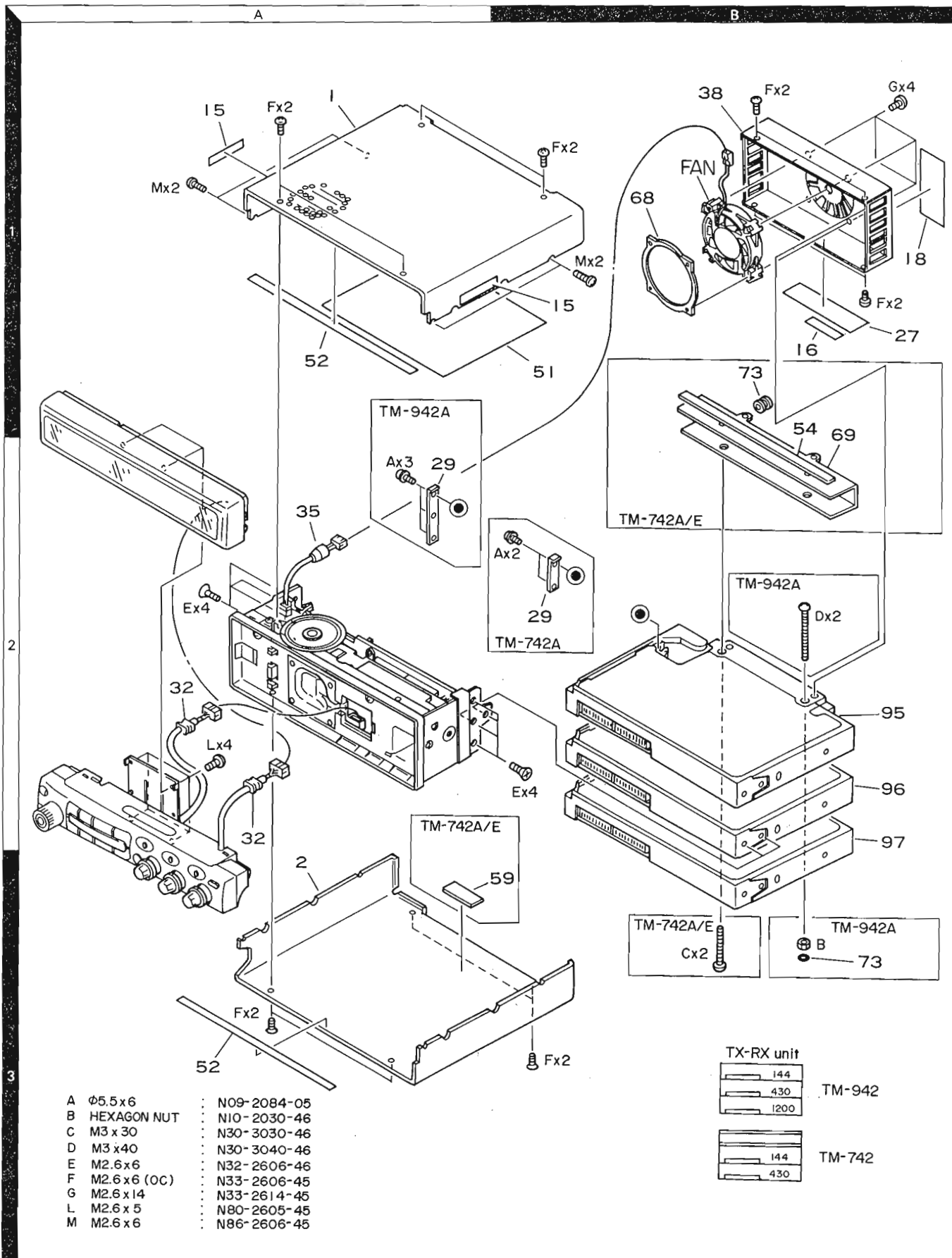


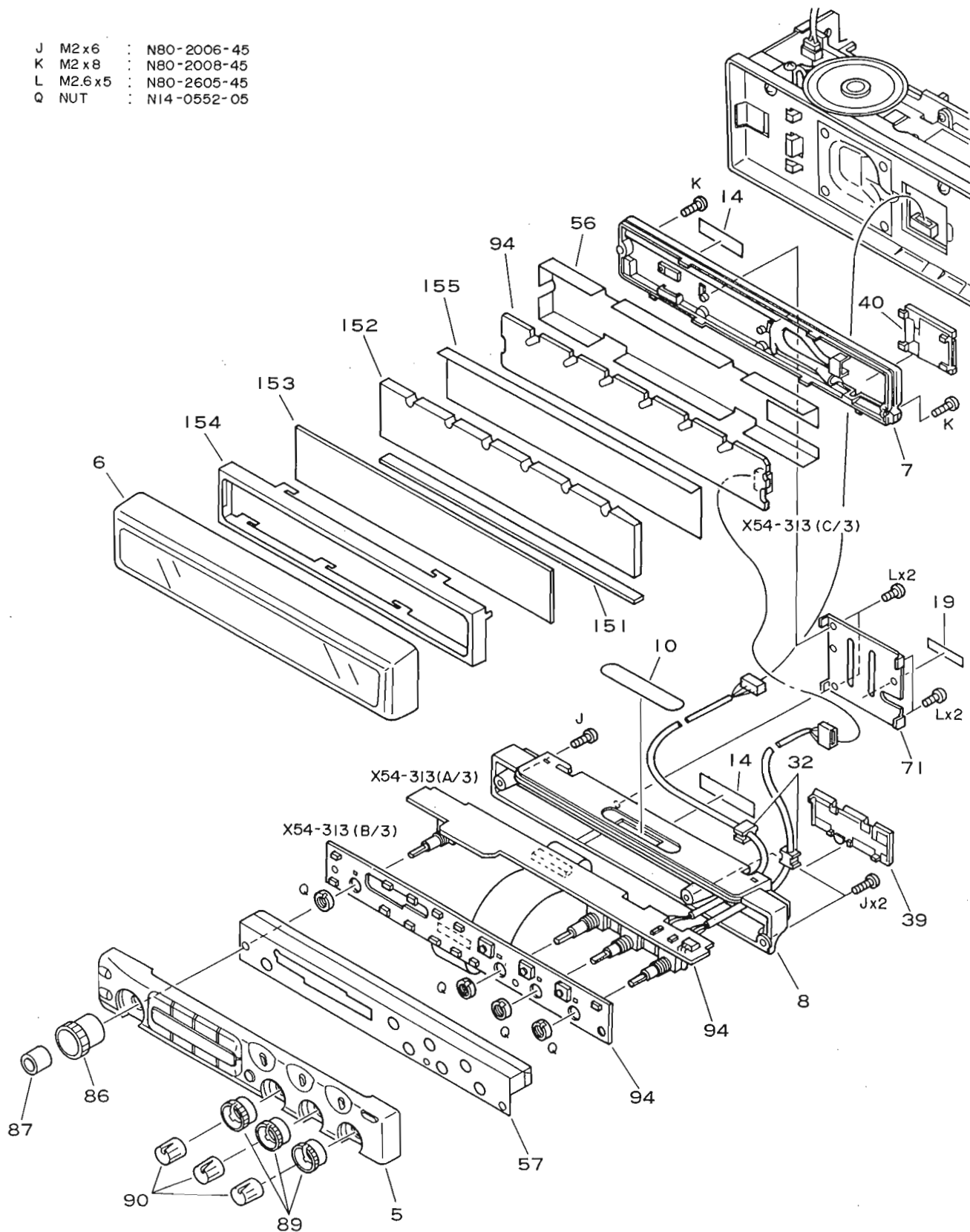
TM-742 A/742 E/942 A

EXPLODED VIEW



EXPLODED VIEW

J	M2x6	:	N80-2006-45
K	M2x8	:	N80-2008-45
L	M2.6x5	:	N80-2605-45
Q	NUT	:	N14-0552-05



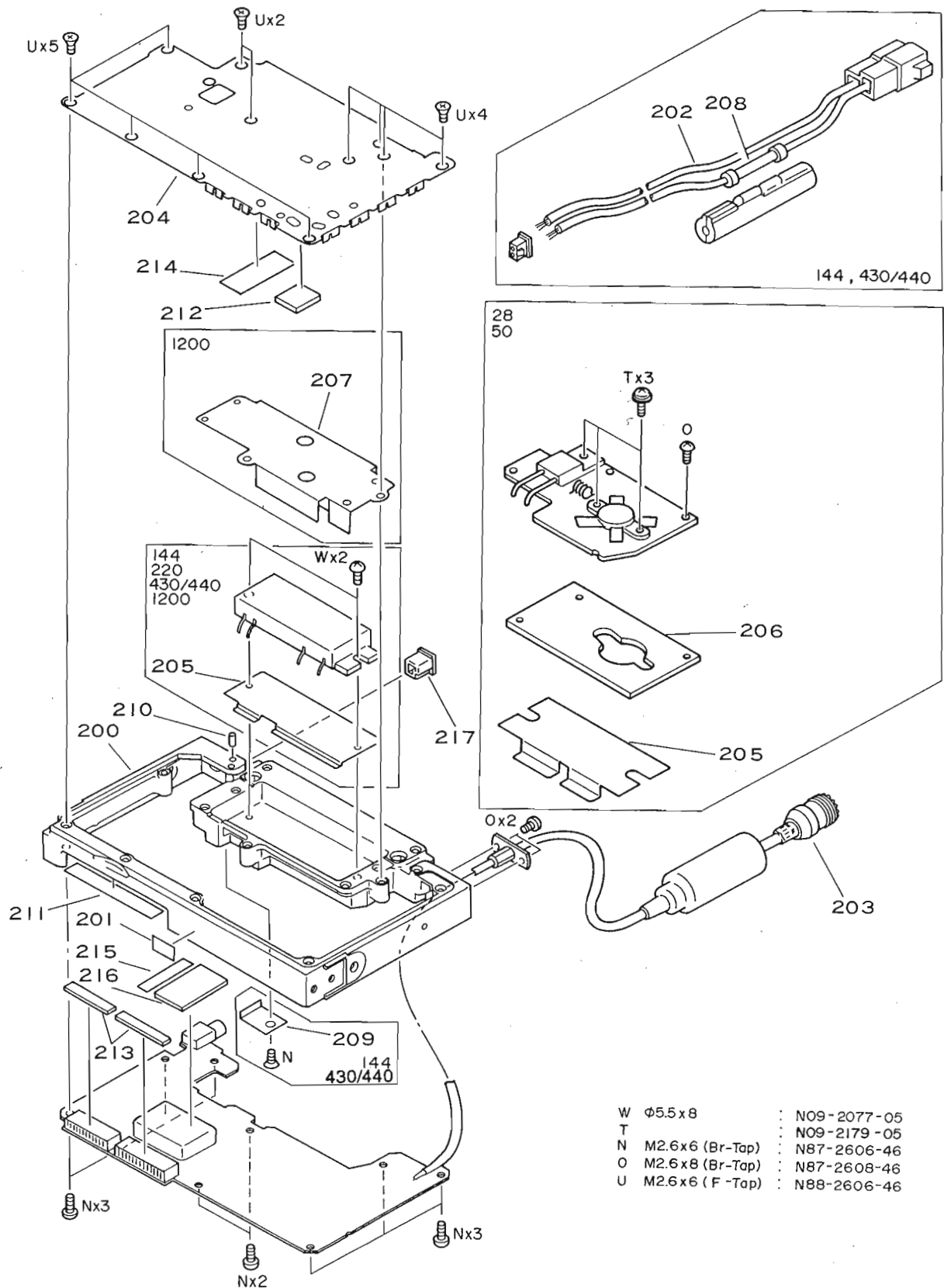
Exploded view diagram of the X53-346 (A/2) and X53-346 (B/2) components. The diagram shows various parts including screws (E, H, J, N), brackets (28, 40, 44, 53), a fan (35), and other hardware (33, 34, 36, 37, 50, 59, 70). Callouts indicate quantities like 'Hx2', 'Ex3', 'Nx3', and 'Ox2'. A legend at the bottom right lists part numbers for screws E, H, J, and N.

Part	Quantity	Part Number
E	M2.6 x 6	N32-2606-46
H	M2.6 x 5	N35-2605-45
J	M2 x 6	N80-2006-45
N	M2.6 x 6 (Br-Top)	N87-2606-46

E	M2.6 x 6	:	N32-2606-46
H	M2.6 x 5	:	N35-2605-45
J	M2 x 6	:	N80-2006-45
N	M2.6 x 6 (Br-Tap)	:	N87-2606-46
O	M2.6 x 8 (Br-Tap)	:	N87-2608-46

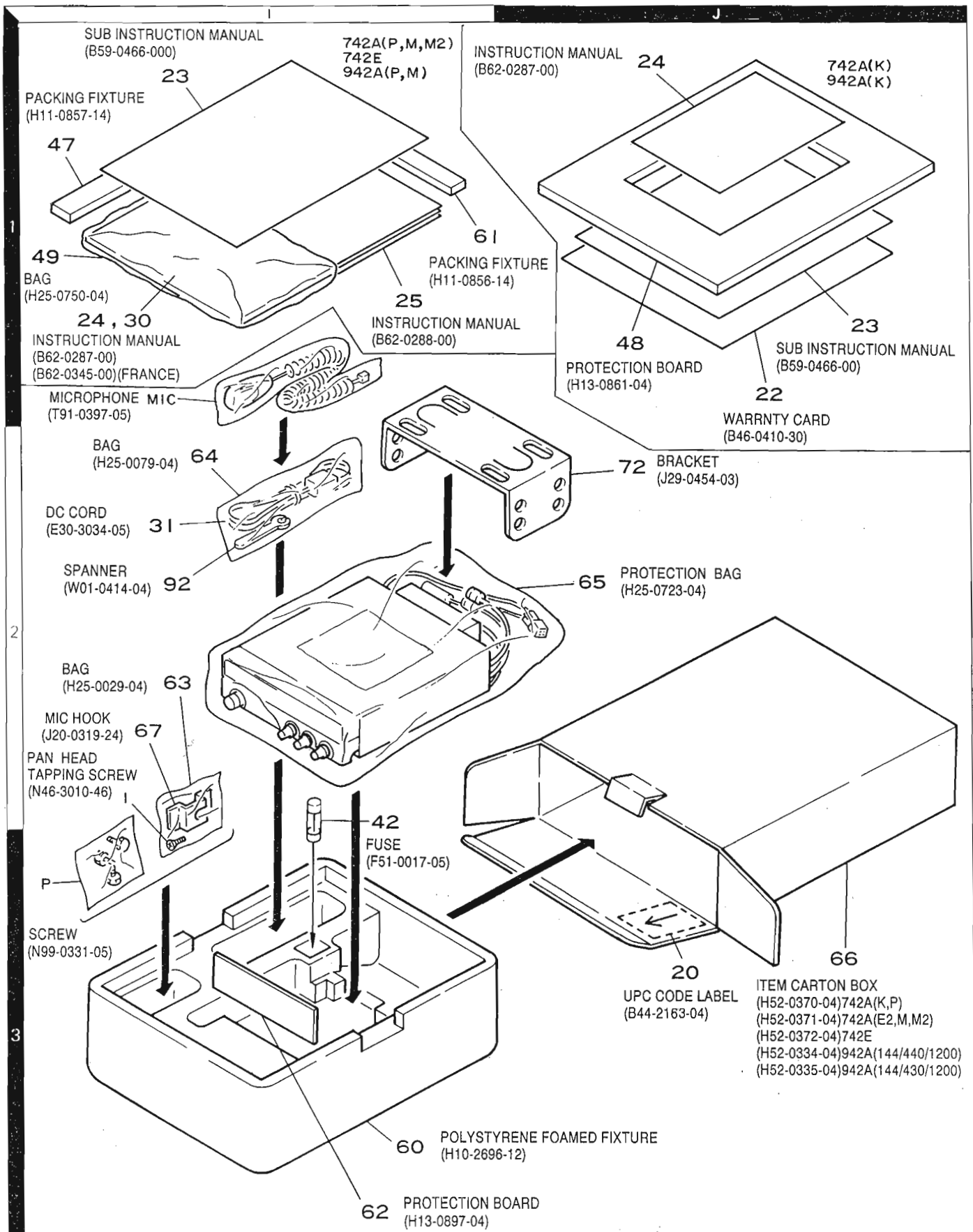
EXPLODED VIEW

TX-RX UNIT



TM-742 A/742 E/942 A

PACKING (UNIT)



PACKING (OPTIONAL BAND UNIT)

